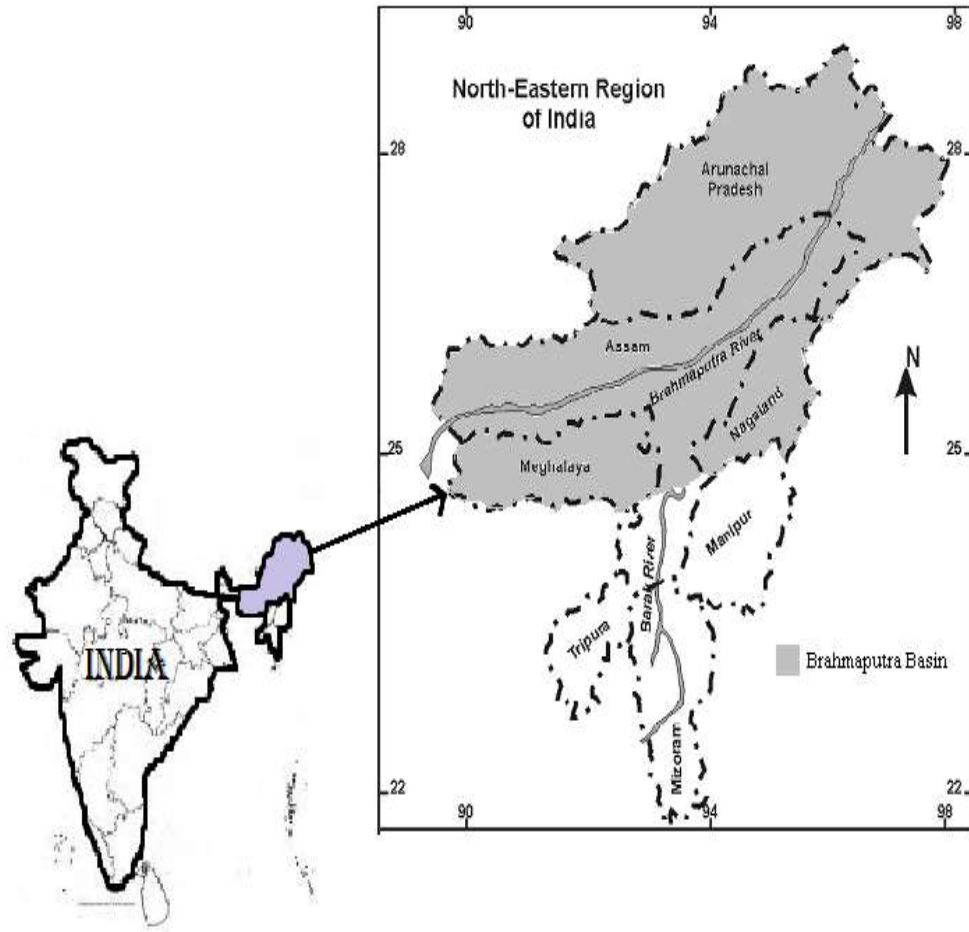


**Gendered approach in capitalizing on
traditional knowledge for water
resources management and environment
preservation by *Apatani* Tribe of
Northeast India**

U. C. SHARMA

**Centre for Natural Resources Management,
V.P.O. Tarore, Jammu-181133, India**

North-east India – Site of Gendered Approach



Major Constraints in the Region

- **Shifting cultivation**
- **Land tenure system**
- **Small land holdings**
- **Conducive climate for pests and diseases**
- **Inhospitable terrain/ inaccessibility**
- **Lack of marketing facilities**

Major components of the system...1

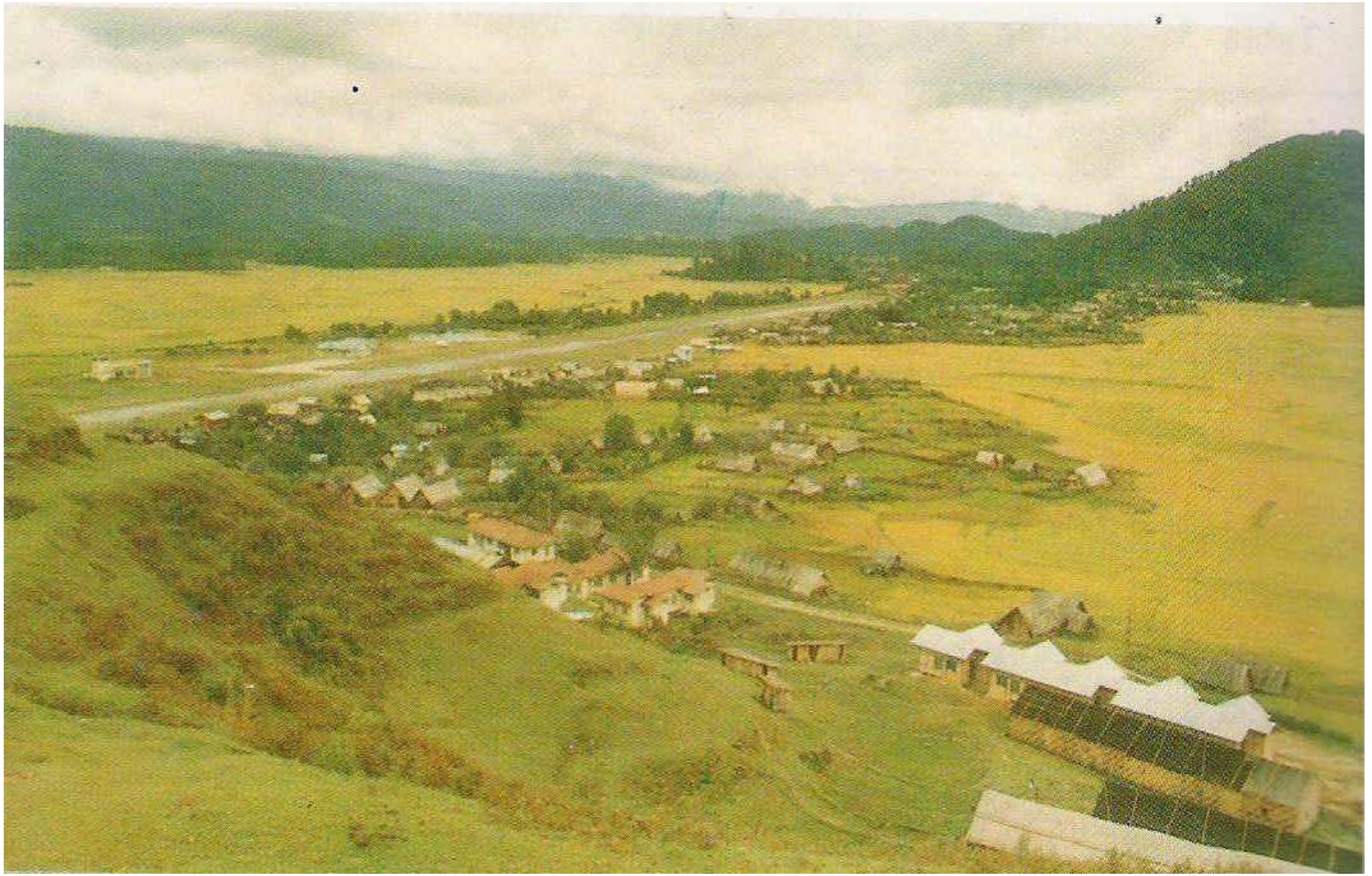
- **1. Labour management**
- **2. Environment preservation**

Conserving soil, tree plantation, Water conservation, Use of farm/ household wastes

- **3. Paddy-cum fish culture**
- **4. Water management**

Major components of the system...2

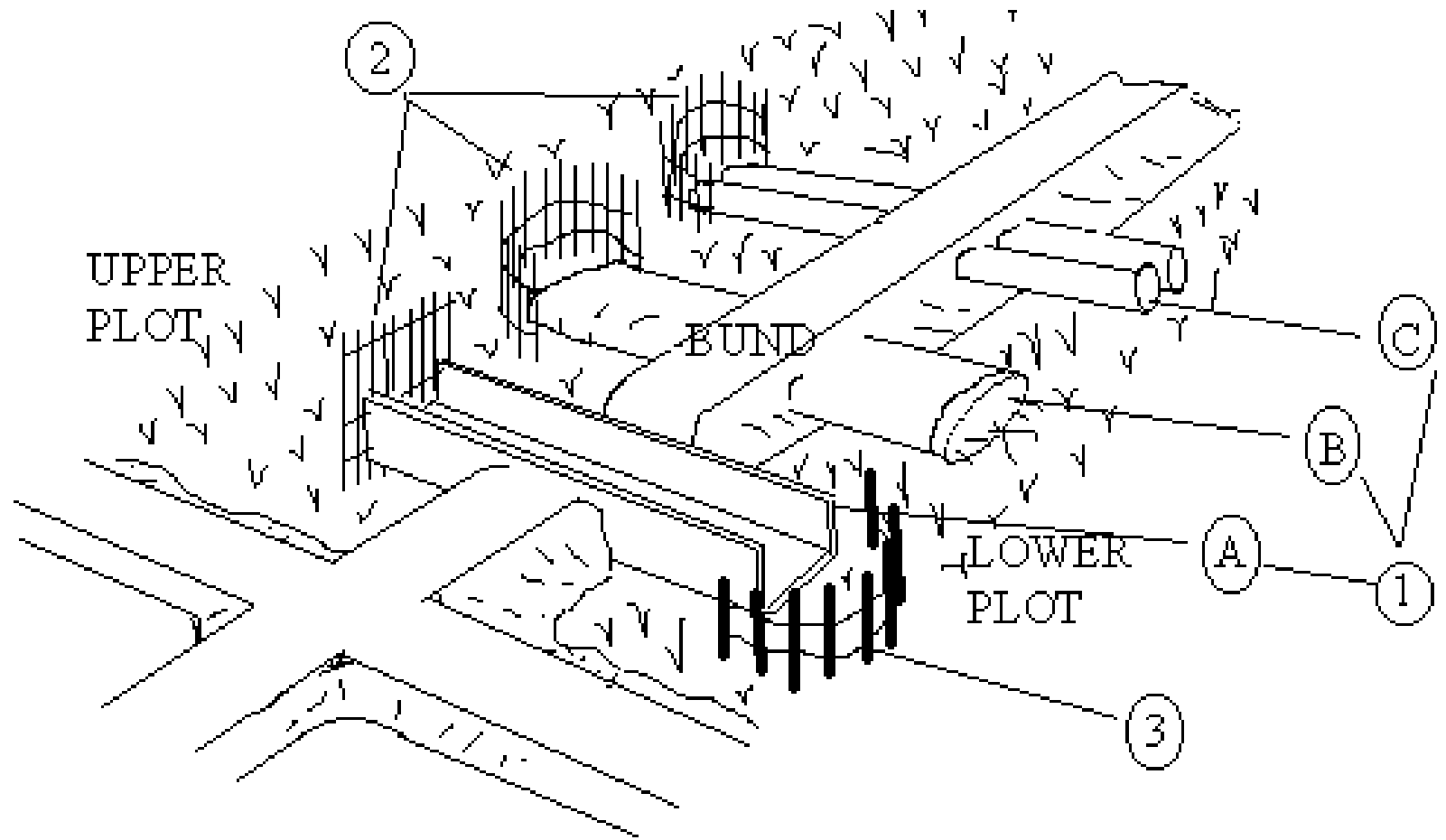
- **5. Land Management**
- **6. Nutrient management**
- **Recycling of agricultural wastes**
- **Burning of paddy straw**
- **Pig and poultry droppings**
- **Free grazing of cattle after rice harvest**
- **Forest humus**
- **Tree branches (*Alnus nepalensis*)**



Rice fields in the *Apatani* plateau



**Fish channels in
the paddy fields**



1. Hubur (A. Made of plank, B. Made of pine tree trunk & C. Made of bamboo stem)
 2. Obstruction for fish- Bamboo net
 3. Erosion control at water outlets – wood sticks
- structures used for inter-plot irrigation cum drainage system in Apatani plateau

Labour Distribution

S. No.	Workers	Operation
1.	Community approach	Fencing and maintenance of main irrigation channels
2.	Men	Building terraces, irrigation channels, fencing, removing earth and planting trees
3.	Women	Nurseries, transplanting seedlings, weeding, fish management, harvesting, thrashing, drying and storage
4.	Boys and girls ' <i>Patang</i> '	All operations
5.	Landless workers	Any assigned work

Gendered Dimensions in Farming Systems

Agricultural	Farming System	
Calendar	Rice cultivation	Orchard plantation
Jan-Feb	Making of channels (M)	Clearing (W)
Mar-Apr	Fencing (M) Nursery raising (W)	Planting (M)
May-Jun	Transplanting (W) Maintenance (M)	Weeding (W) Maintenance (M)
Jul-Aug	Weeding (W)	Harvesting (W)
Sep-Oct	Harvesting (both)	Harvesting (both)
Nov-Dec	Harvesting (both)	Harvesting (both)

Key Message

This system of water resources management has been devised by the *Apatani* tribe through their ingenuity, skill and centuries of experience. Gendered approach to the system and division of labor work among men and women has given it sustainability, self-reliance, women empowerment and enduring livelihood security.

A wide-angle landscape photograph showing a valley with terraced agricultural fields in the foreground, green hills in the middle ground, and a range of mountains with snow-capped peaks in the background under a clear blue sky. The text "THANK YOU VERY MUCH" is overlaid in the center in a bold, pink font.

THANK YOU VERY MUCH